

Installation instructions for OTL (T) Shower Formers

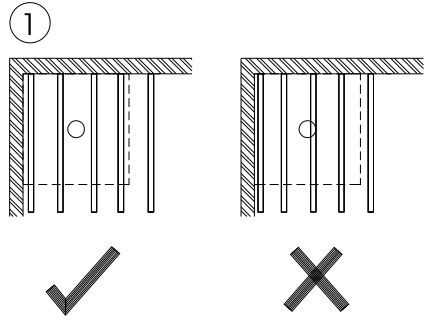
For Further information or assistance, please contact Aquatecnic Limited:-

Tel: 0845 2268283

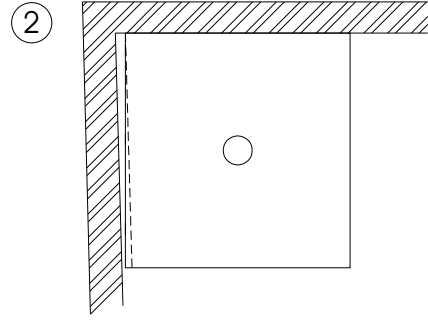
Fax: 0845 2268293

e-mail: info@aquatecnic.net

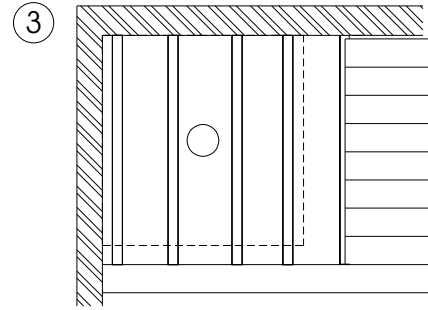
website: www.wetroom.info



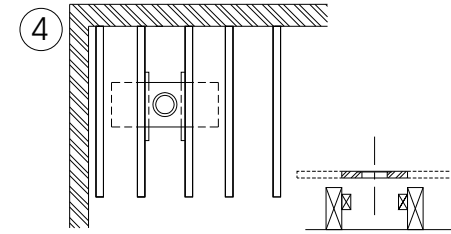
1 Locate the position of the shower area. Place the tray on the floor. Position the waste outlet hole so that it is not obstructed by any of the joists.



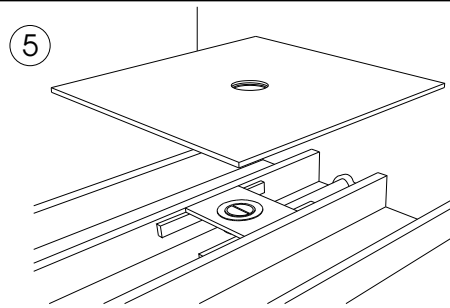
2 Place the tray into the corner. Scribe and cut to shape if necessary.



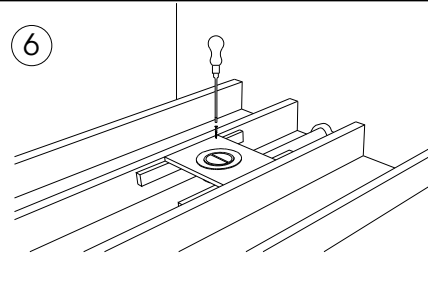
3 With the tray on the floor mark its position with a pencil. Move tray aside. Then remove the floor boards back to the nearest joists.



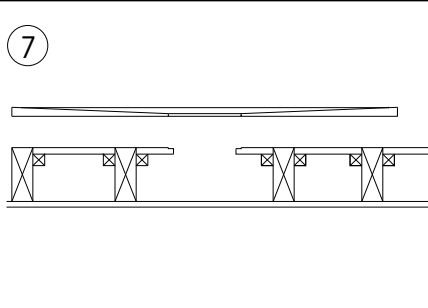
4 Place the supplied, piece of plywood (waste support) with the circular rebated edge to the top, over the position of the waste outlet. Cut to fit between the joists. Support on 2no. 50mm x 25mm battens screwed to the sides of the joists. Ensure the waste support is level with the top of the joists.



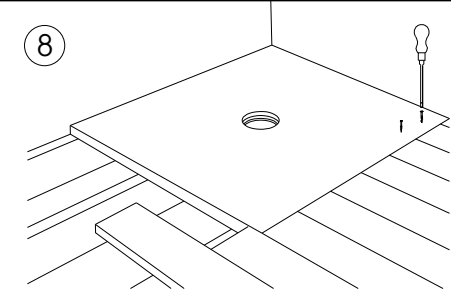
5 Place the tray into position and line up the waste support as necessary.



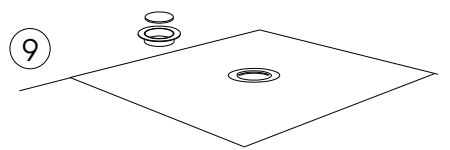
6 Carefully remove the tray and secure the waste support to the 25x50 battens using 2 off 50mm x No.8 countersunk screws. Install the trap as per the manufacturer's instructions.



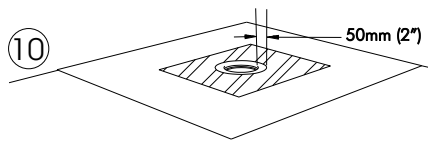
7 Build a false floor to the complete area covered by the tray. Ensure any parts of the tray, overhanging a joist (above right), are supported by false floor, noggins or trimmers. Ensure whole of the floor and tray are level.



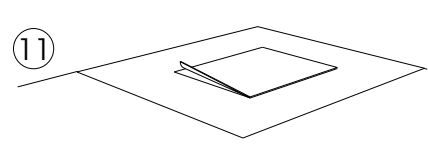
8 Secure the tray to the joists using 50mm x No.8 countersunk screws on 225mm centres. Remove rest of floor boards and replace with 24mm WPB plywood. Secured with 60mm x No.10 countersunk screws at 300mm centres



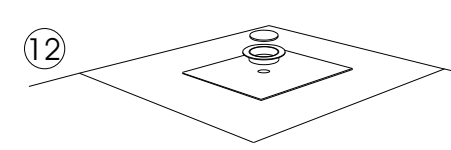
9 Remove cover and clamping ring from the trap.



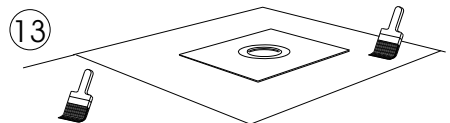
10 Apply compound to hatched area.....



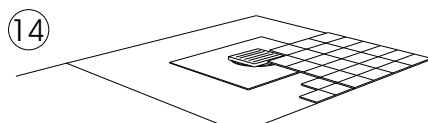
11 Position tanking mat, press down and let dry.



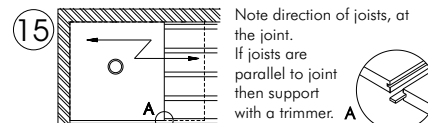
12 Push the clamping ring down into position. Mark the inside diameter on the tanking sleeve with a felt tip pen. Remove clamping ring and carefully cut out a circular hole. With a small brush apply tanking compound through the hole, to the underside of the tanking sleeve and the rim of the trap.



13 Tank the whole area including the tray, as per the manufacturer's instructions.



14 Loosely position the grid and tile around. Then remove the grid & re bed it flush with the tiles.



15 Note direction of joists, at the joint. If joists are parallel to joint then support with a trimmer. A Larger formers come in 2 parts. Make a tight join by tongue and gluing together, as A.

Push down the clamping ring, secure and refit the cover plate.